

Fuel Oil Handling



Complete Systems and a Fully Rounded Line Of Accessory Equipment

Preferred Utilities designs and manufactures oil pumping, filtration and heating systems that provide a reliable supply of No. 2 through No. 6 fuel oil for:

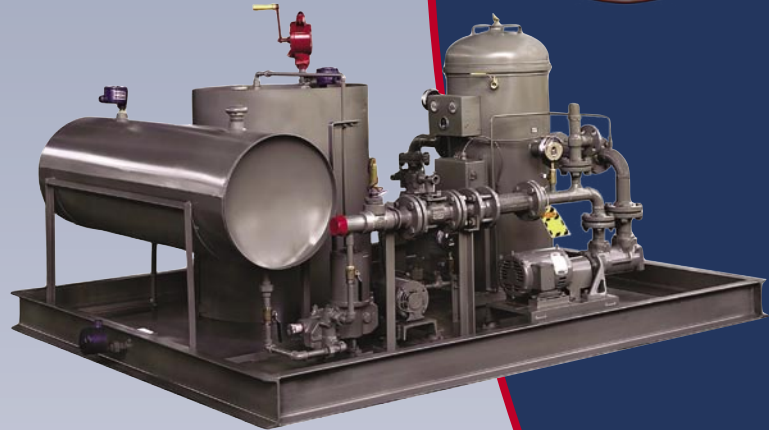
- Boiler Systems
- Emergency Diesel Generators

Fuel Handling Engineers – Preferred designs, engineers and manufactures fuel handling systems every day. Preferred's fuel handling systems reflect generations of fuel handling experience. This experience, along with today's state of the art control technology, has placed Preferred in the unique position to solve any specialized fuel handling problem.

Typical Systems Include:

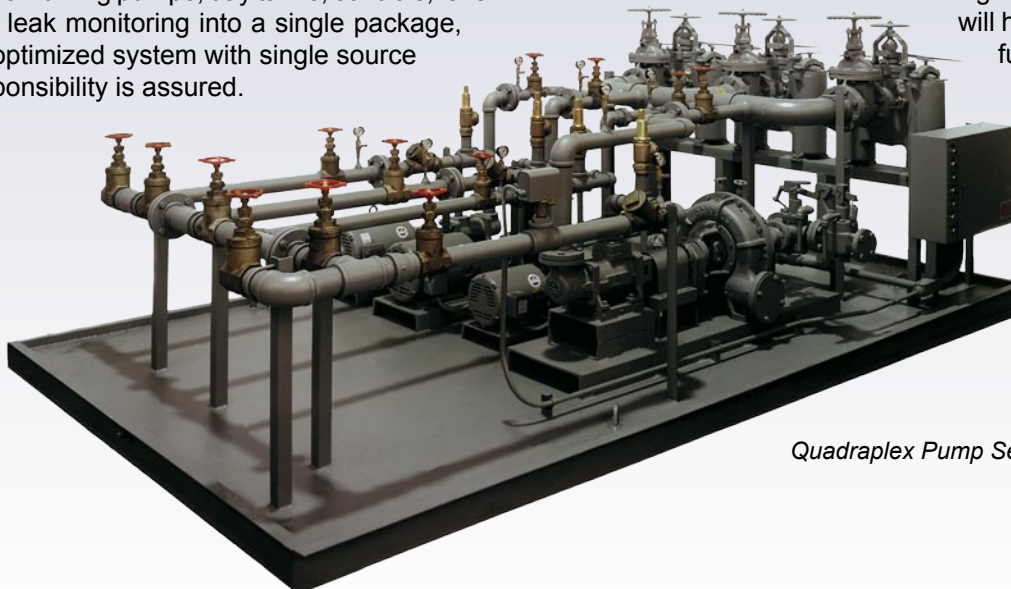
- Pump Sets
- Pump and Heater Sets
- Filtration Sets
- Day Tanks
- Tank Gauge/Leak Detectors
- Control Cabinets
- Fuel Oil Specialties (Switches, Anti-Syphon Valves, Vent Protectors, Fire Safety Valves, Spill Containers, etc.)

Single Source Responsibility – Incorporating a total systems approach to fuel management, each job is treated as a unique design project. Pumps are chosen to meet required flow and pressure criteria for the fuels being pumped. A control strategy is chosen to provide the desired degree of automation while assuring the highest levels of reliability. Monitoring and alarm points are selected to alert operations staff of any change in status. By combining pumps, day tanks, controls, level and leak monitoring into a single package, an optimized system with single source responsibility is assured.



Custom Automatic Filtration Set

Innovation – Preferred occupies a position of acknowledged leadership in the manufacture of fuel oil transfer systems for boilers and emergency diesel generators. The new Automatic Fuel Oil Transfer Pump Set, (ATPS) for the first time puts in place a "self checking" fuel system. Preferred recognizes that these systems are often ignored. The ATPS is designed to ensure that the emergency backup systems will have a reliable source of fuel oil when needed.



Quadraplex Pump Set